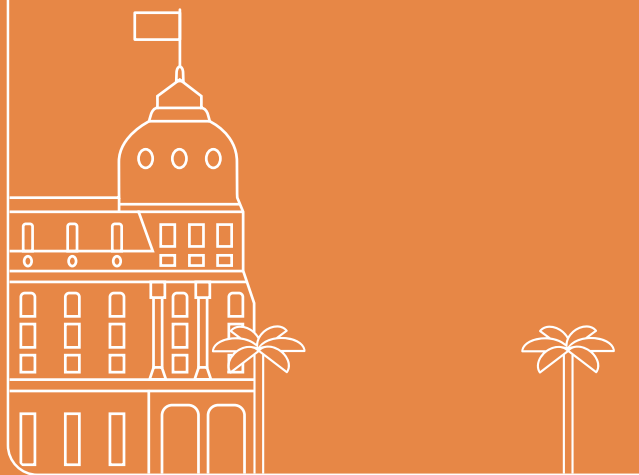


FARE GUIDE

CARDS, SEASON TICKETS AND SALES CHANNELS



**LIGNES
D'AZUR**
Nice Côte d'Azur en toute liberté

**MÉTROPOLE
NICE CÔTE D'AZUR**



* Conversation in Nice, a work by Jaume Plensa

DID YOU KNOW?

+ ECOLOGICAL + FASTER + PRACTICAL + FREEDOM

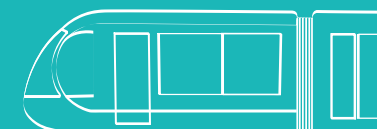


RELOAD YOUR TICKETS ONTO THE SAME CARD!

1 CARD THAT CAN BE RELOADED WITH THE TICKETS I WANT.



Cost of the card: €2, refundable in sales and mobile agencies and at points of sale



ANONYMOUS AND PERSONAL CARDS



Discover the collection of anonymous contactless cards!

They can be reloaded and allow for buying and reloading occasional tickets:

- Single
- 1 Return
- Multi-trip
- 1-day Pass
- 2-day Pass
- 7-day Pass



Cost of the card: €2, refundable in commercial and mobile agencies and at points of sale. No refund can be made for the tickets loaded on the card if this is lost, stolen or damaged.



The anonymous contactless Emergency Single Card is only sold on board Lignes d'Azur buses. It allows for coming to the rescue of passengers who have forgotten their card or who want to get one.

This card is then reloadable and refundable, just like all the other anonymous contactless cards.



My Card is reloadable and personal (name and photo). It allows for purchasing all monthly and annual season tickets.

It also allows for purchasing occasional tickets:

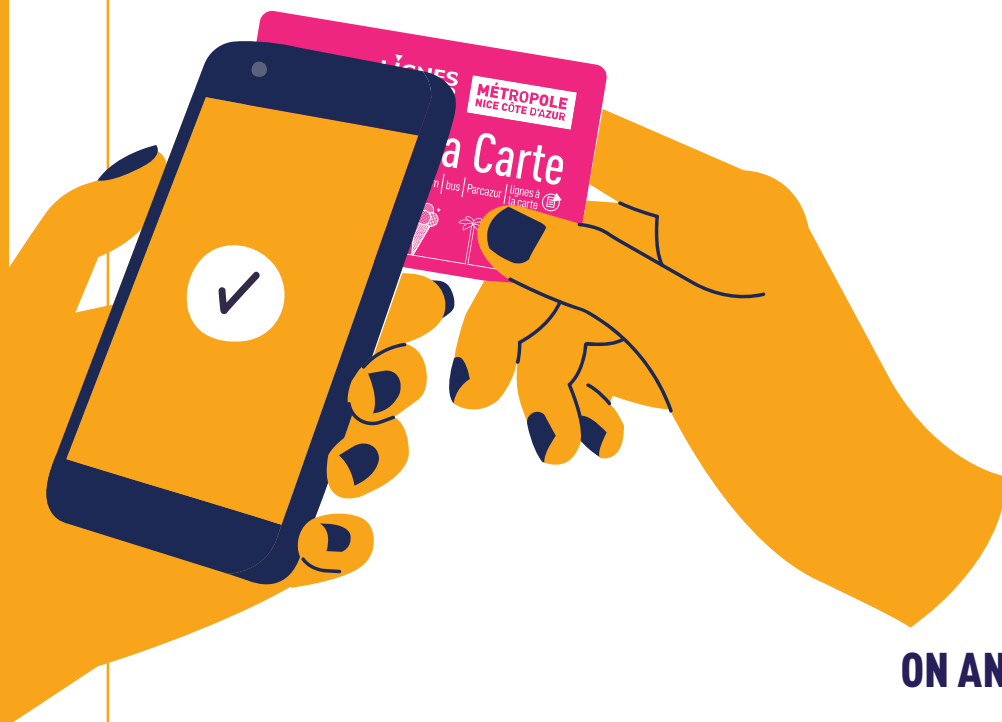
- Single
- 1 Return
- Multi-trip
- 1-day Pass
- 2-day Pass
- 7-day Pass



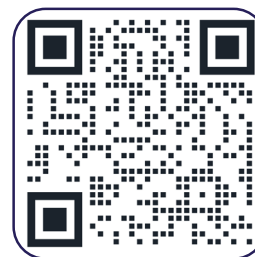
Cost of the card: €2, non-refundable. If your My Card is lost, stolen or damaged, a duplicate containing the remaining trips or season ticket allowance can be issued in an agency. This service is billed at €10.

I PURCHASE AND RELOAD

tickets for me and for my friends and family!



LIGNES D'AZUR TICKETS



ON ANDROID

I buy and reload occasional and season tickets on my phone or on a Lignes d'Azur card.

TELEPHONE OR CARD

I validate with a simple swipe on the validator.

ON IOS

I must have a Lignes d'Azur contactless card, and I can reload it via my phone: occasional and season tickets.

CARD

I validate with a simple swipe on the validator.

* Cost to create card: €2, non-refundable.



CHOOSE THE CARD

that suits you best!



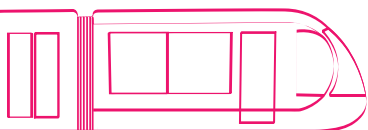
I TRAVEL EVERY DAY

- Annual season ticket
- Monthly season ticket
- Renewable season ticket
- Occasional tickets



I TRAVEL OCCASIONALLY

- Occasional tickets



CHOOSE THE TICKET

that suits you best!



I TRAVEL OCCASIONALLY



1 Single trip € 1,70

1 trip with connections for 74 minutes (except for lines with a special fare*). **Return trips prohibited.**



Emergency single € 2

Sold on board buses only. 1 single trip with connections for 74 minutes (except for lines with a special fare*). **Return trips prohibited..**



Multi-trip From € 1,70

Load from 1 to 100 trips on your card. Connections possible for 74 minutes following the 1st validation (except for lines with a special fare*). Can be used simultaneously by multiple passengers. Validation must be made for every passenger. **This ticket allows entry to Parcazur.**



1-day PASS € 7

Unlimited journeys for 24 hours after first validation (except for lines with a special fare*). **This ticket allows entry to Parcazur.**



2-day PASS € 13

Unlimited journeys for 48 hours after first validation (except for lines with a special fare*). **This ticket allows entry to Parcazur.**



7-day PASS € 20

Unlimited journeys for 7 days after first validation (except for lines with a special. **This ticket allows entry to Parcazur.**



1 Return € 3,40

Allows one return with connections. Connections possible on each leg for 74 minutes following the 1st validation (except for lines with a special fare*). **This ticket allows entry to Parcazur.**



AZUR TICKET € 2,50

1 single trip on the Lignes d'Azur network and one single connection within 2 1/2 hours on an Alpes-Maritimes inter-urban line to leave the Métropole Nice Côte d'Azur area (except for lines with a special fare*). **Does not allow for parking in a Parcazur.**



PARCAZUR Leisure € 6

Allows for parking in any Parcazur from Monday to Friday from 7 p.m. to the end of service and on Saturdays, Sundays and public holidays from 2 p.m. until the end of service. **This ticket allows entry to all Parcazurs without travelling on the Lignes d'Azur network.**



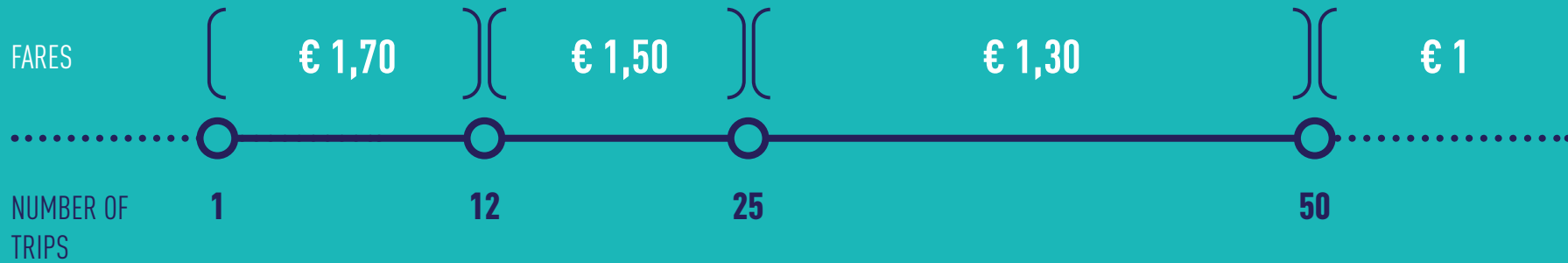
1 Airport Return € 10

Entitles you to one return trip with connections during the 74 minutes following validation, departing from and heading to the airport (except for lines with a special fare*). **This ticket can be reloaded with airport return trips.**



*Except for lines with a special fare: 100% Snow bus, Randobus

THE MULTI-TRIP TICKET



I want to reload my card with 15 trips. I pay for the first twelve at €1.70 and the next 3 at €1.50 = €24.90



I need to reload my card with 30 trips, I pay for the first 12 at €1.70, the next 13 at €1.50 and the last 5 at €1.30 = €46.40



I only want to reload with 6 trips, I pay €1.70 per trip = €10.20



CHOOSE THE SEASON TICKET

that suits you best!



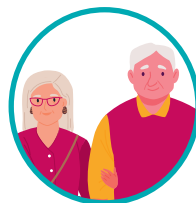
I TRAVEL REGULARLY



UNDER 26



GENERAL
PUBLIC



65+

I buy or reload
all my season tickets* on My Card
USING MY PHONE!



Buy and reload tickets using the Lignes d'Azur Tickets app!

More information on page 4.

I already have My Card:

I can renew my subscription using the Lignes d'Azur Tickets app.

I don't have My Card yet:

I can order it online
or
I can buy it directly on the Lignes d'Azur Tickets app if I have an Android phone.



If your My Card is lost, stolen or damaged, a duplicate containing the remaining trips or season ticket allowance can be issued in an agency. This service is billed at €10.

* annual or monthly season ticket



YOUR SEASON TICKETS



UNDER 26



GENERAL PUBLIC



65 +



SOLIDARITY



FARES FOR YOUNG PERSONS UNDER 26



	Description	Annual season ticket	Monthly season ticket	Unlimited formula (renewable season ticket)	Administration fees
Under 26	Unlimited trips on the Lignes d'Azur network (except for special services).	€ 180 b	€ 22,50 b	€16/month*	€ 12 (1 € pour le mensuel)
School Pass (pre-school, primary school pupil or boarder)	School transport package - For pre-school/primary school pupils: 1 return per day on school days only. - For boarders: 1 return per week, excluding school holidays.	€ 50	-	-	€ 12
Scolabus Extension	Unlimited trips on the Lignes d'Azur network (except for special services)	€ 90 10X	-	-	€ 12

b Available from the e-shop **i** Charge for the card: €2, non-refundable **10X** Available in 10 instalments at no extra cost *Of which €1 administration fees

THE DOCUMENTS I NEED TO PROVIDE

Mandatory documents

- Currently valid identity document to create the card (original)
- Bank details (if paying in instalments)
- Current Lignes d'Azur My Card
- 1 recent ID photo, showing your full face, uncovered (for creation)

Additional documents

- Scolabus Extension:
 - Currently valid Scolabus Card
- School Pass:
 - Enrolment certificate for the over 16s



GENERAL PUBLIC FARES FOR UNLIMITED TRAVEL



	Annual season ticket	Monthly season ticket	Unlimited formula (renewable season ticket)	Administration fees
Students or apprentices 26+	€ 180	€ 22.50	€16/month*	€ 12 (€1 for the monthly)
26-64	€ 360	€ 45	€ 30	-

Available from the e-shop Charge for the card: €2, non-refundable Available in 10 instalments at no extra cost

*Of which €1 administration fees

BENEFIT You save 4 months when choosing an annual season ticket!

THE DOCUMENTS I NEED TO PROVIDE

Mandatory documents

- Currently valid identity document to create the card (original)
- Bank details (if paying by instalment)
- My current Lignes d'Azur My Card
- 1 recent ID photo, showing your full face, uncovered (for creation)

Additional documents

- Students 26+:
 - Currently valid student card (original) or currently valid enrolment certificate
- Apprentices 26+:
 - Currently valid apprenticeship contract (original)



DID YOU KNOW?

50% OF YOUR SEASON TICKET REFUNDED

It has been mandatory for employers to pay for their employees' public transport costs for getting from home to work since 2009 for private sector workers and since 2010 for public service agents, who are covered up to 75% (from 01/09/2023).

65+ FARES

FOR UNLIMITED TRAVEL



	Annual season ticket	Monthly season ticket	Unlimited formula (renewable season ticket)	Administration fees
65+	€ 180	€ 22,50	16 €/ mois*	€ 12 (€1 for the monthly)
Non-taxpayers 65+	€ 0	-	-	€ 15

Available from the e-shop Charge for the card: €2, non-refundable
 Available in 10 instalments at no extra cost *Of which €1 administration fees

THE DOCUMENTS I NEED TO PROVIDE

Mandatory documents

- Currently valid identity document to create the card (original)
- Bank details (if paying in instalments)
- Current Lignes d'Azur My Card
- 1 recent ID photo, showing your full face, uncovered (for creation)

Additional documents

- Non-taxpayers 65+:
- The last income tax bill or statement (original) showing an address within the Métropole Nice Côte d'Azur area and a tax amount payable of "€0" or "non-taxable".



SOLIDARITY FARES FOR UNLIMITED TRAVEL

	Annual season ticket	Monthly season ticket	Administration fees
Social	€ 180 10X	€ 22,50	€ 12 (€1 for the monthly)
Civilian blind, civilian handicapped and people with a work disability, disabled veterans	€ 0	-	€ 15
Accompanying people with reduced mobility	€ 0	-	€ 15
Veteran	€ 0	-	€ 15

 Available from the e-shop  Charge for the card: €2, non-refundable **10X** Available in 10 instalments at no extra cost



THE DOCUMENTS I NEED TO PROVIDE

Mandatory documents

- Currently valid identity document to create the card (original)
- Bank details (if paying in instalments)
- 1 recent ID photo, showing your full face, uncovered (for creation)

Additional documents

Social:

Top-up CSS recipient:

- Certificate of entitlement to complementary state health insurance (CSS) or AME [State medical aid] certificate issued by the CPAM (French public health insurance).

Jobseeker:

- Letter of status less than 3 months old, issued by the Pôle Emploi [French Jobcentre] (original).

Civilian blind:

- Certificate of domicile in the Métropole Nice Côte d'Azur (original)
- Medical certificate attesting to 100% practical blindness and the need for the help of a third party or the "White cane" card (original).

Disabled veteran:

- Disabled veterans' card with 75% disability (original)
- For a renewal: Lignes d'Azur card + Accompanying people with reduced mobility card
- Certificate of domicile in the Métropole Nice Côte d'Azur (original)

Veteran:

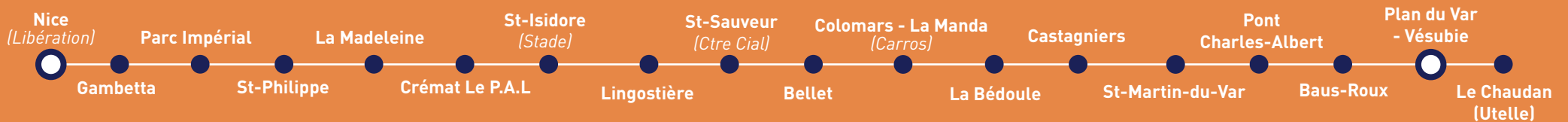
- Certificate of domicile in the Métropole Nice Côte d'Azur (original)
- Veteran's card to provided only for the creation of the card (original)

Non-taxable civilian handicapped and people with a work disability:

- The last income tax bill or statement (original) showing an address within the Métropole Nice Côte d'Azur area and a tax amount payable of "€0" or "non-taxable".
- Recovery (CIMR) + work disability card (photocopy) or civilian handicapped card with 80% disability (original). In the event the tax domiciliation is outside the Métropole Nice Côte d'Azur, the beneficiary must also produce the latest council tax bill, in the same name, for a property located within the Métropole Nice Côte d'Azur area.

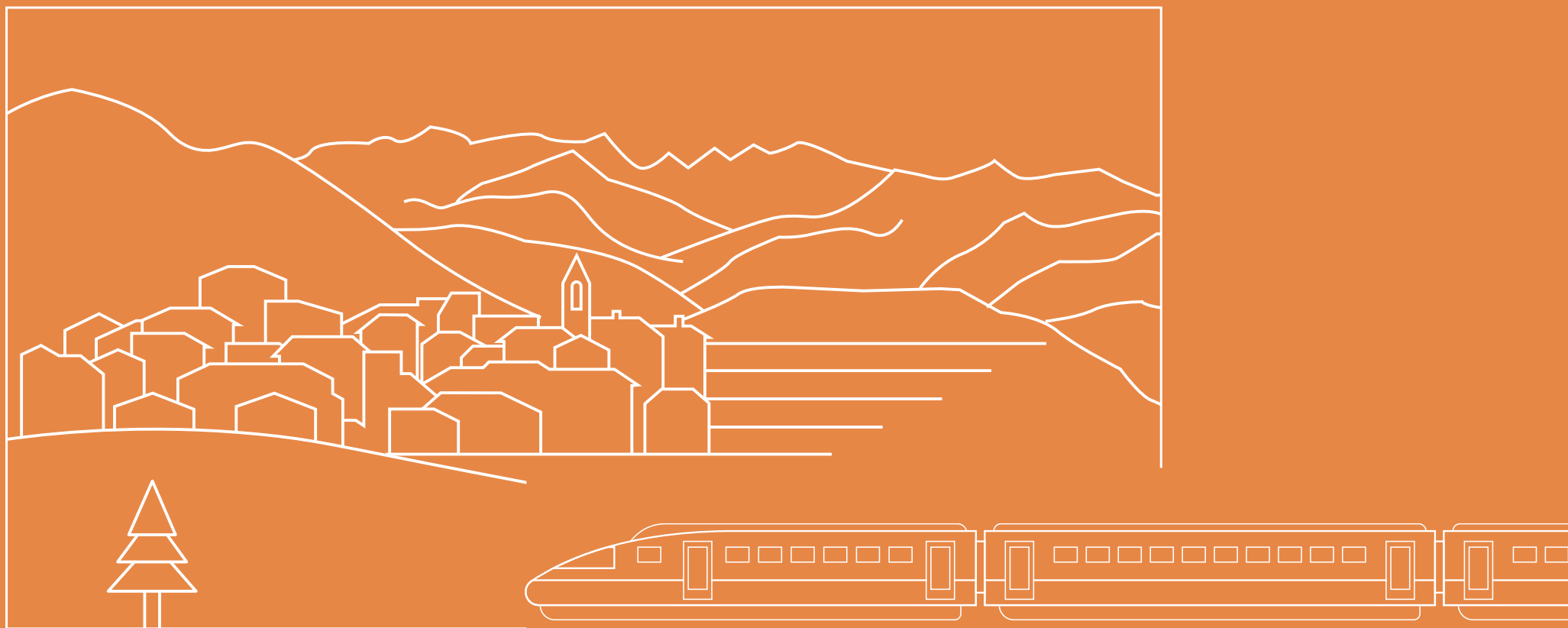
New!

You can now use the Provence railway line



between Nice and Le Chaudan with your
Lignes d'Azur tickets!

All tickets and season tickets are accepted on the line and allow for connections with the entire Lignes d'Azur network.



MULTIMODAL TICKETS

SudAzur Pass:

CHOICE OF 7 ZONES

The SUDAZUR Pass is available across the whole of the Alpes-Maritimes and the Principality of Monaco. It is valid for a year or one calendar month, i.e. from the 1st to the last day of the month. Sales are open from the 20th of the month before the valid from date for the season ticket. It allows you to use a single season ticket to travel easily across multiple public transport networks. Modular, it adapts perfectly to your needs: you can therefore purchase 1, 2 or 3 neighbouring zones or the entire Alpes-Maritimes department. You will have access to the urban network(s) in the zones selected and to the regional ZOU! inter-urban network (bus, trains and Provence railway line).



ABONNEZ-VOUS POUR 1, 2, 3 ZONES OU...
TOUT LE DÉPARTEMENT !

1 SINGLE SEASON TICKET

Loaded on your card, so you can travel on multiple networks.

1 CHOICE OF CUSTOMIZATION

Choose the zones according to your needs

1 PREFERENTIAL FARE

With a cost lower than that of all the season tickets combined or of a private vehicle.

More information on
lignesdazur.com

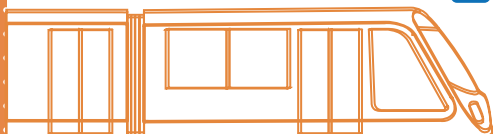
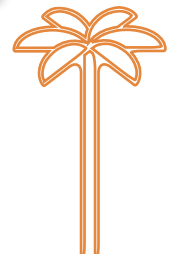
With the Sud Region and its partners, enjoy unlimited travel on all the transport networks of your choice (bus, train, tram, etc.) in the Alpes-Maritimes.

Season tickets

Zone 4 Métropole Nice Côte d'Azur + Pays de Paillons	Annual season ticket	Monthly season ticket	Administration fees
	€ 540 12X	€ 53	€ 0

12X Available in 12 instalments at no extra cost

i Duplicate if lost, stolen or damaged: €8



SudAzur Pass: General public

3 whole days	7 whole days	14 whole days
€ 35	€ 50	€ 80

SudAzur Pass: under 18s accompanied by an adult

3 whole days	7 whole days	14 whole days
€ 30	€ 40	€ 65

Duplicate if lost, stolen or damaged: -€8



Unlimited travel on the Lignes d'Azur network during the period in which the ticket is valid, as of 1st validation. Does not allow for taking lines with special fares. Can be used on the urban network lines in the Alpes-Maritimes and Monaco, and on TER, LER, CP and 06 Inter-urban Network lines.

Ticket Azur:



€ 2,50

1 single trip on the Lignes d'Azur* network and one single connection within 2 1/2 hours on an Alpes-Maritimes inter-urban line to leave the Métropole Nice Côte d'Azur area. Does not allow for parking in a Parcazur.

Carte Azur:



Unlimited trips on the department's various networks

Annual season ticket	Monthly season ticket
€ 450	€ 52

Duplicate if lost, stolen or damaged: €10

With the Carte Azur you can enjoy unlimited travel across the entire department, on the LIGNES D'AZUR, ZOU!, 06, ENVIBUS, PALM BUS, ZEST and AUTOBUS DE MONACO* networks!

Where can you get the Carte Azur?

NICE

Espace Mobilités :33, boulevard Dubouchage

Thiers : 17, avenue Thiers

Agences mobiles < Infobus >

(schedule available on lignesdazur.com)

CAGNES-SUR-MER

Galerie Renoir :17, avenue Auguste Renoir

ANTIBES

Pôle d'échanges Antibes, boulevard Général Vautrin

VALBONNE

SOPHIA-ANTIPOLIS

Bus station, traverse des Messugues

MENTON

21, avenue de Sospel

VALLAURIS

Agence îlot Elena, boulevard Jacques Ugo

ROQUEFORT-LES-PINS

Town Hall, place Jean-Antoine Merle

VILLENEUVE-LOUBET

Médiathèque Jean d'Ormesson,

30, allée Simone Veil

MONACO

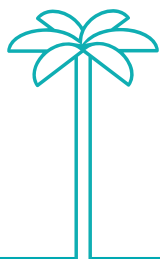
Agence Compagnie des Autobus de Monaco, 3, avenue J-F Kennedy



*Except for lines with a special fare: 100% Snow bus, Randobus. To be in order, you must validate your ticket every time you board the bus or tram. Valid for 365 days as of the validity start date set by the customer at the time of purchase.

Where can I buy and reload tickets and season tickets?

	1 single trip	Emergency single	Return	1, 2, 7-day pass	Multi-trip	Annual/monthly season ticket	Renewable season ticket
	€ 1,70	€ 2	€ 3,40	€ 7/ € 13/ € 20	From € 1,70	Fares and distribution according to conditions	Fares and distribution according to conditions
Sales and mobile agencies			● ●	● ●	● ●	● ●	● ●
Ticket Machines	● ●		● ●	● ●	● ●	●	
Lignes d'Azur points of sale			● ●	● ●	● ●	●	
Mobile app on Android	● ●		● ●	● ●	● ●	● ●	
Mobile app on iOS	●		●	●	●	●	
On-line agency lignesdazur.com				● ●	● ●	● ●	
On board buses		●					



● buy Lignes d'Azur tickets

● reload Lignes d'Azur tickets



Sales agencies:

ESPACE MOBILITÉS

33, bd. Dubouchage - 06000 Nice

① ② Jean Médecin

GALERIE RENOIR

17, av. Auguste Renoir -

06800 Cagnes-sur-Mer

CENTRE COMMERCIAL CAP3000

Avenue Eugène Donadeï -

06700 Saint-Laurent-du-Var

HÔTEL DE VILLE - SAINT-LAURENT-DU-VAR

222, esplanade du Levant -

06700 Saint-Laurent-du-Var

Mobile agencies:

Every day except Sundays and public holidays, the mobile agencies criss-cross the Nice Côte d'Azur region and come to you, to your town, your place of work or your school, to offer you all the services of a classic agency:

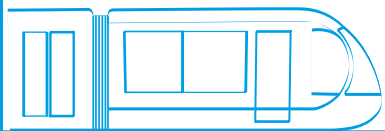
- Information and documents
- Create or renew season tickets
- Sell tickets

Schedule available on lignesdazur.com

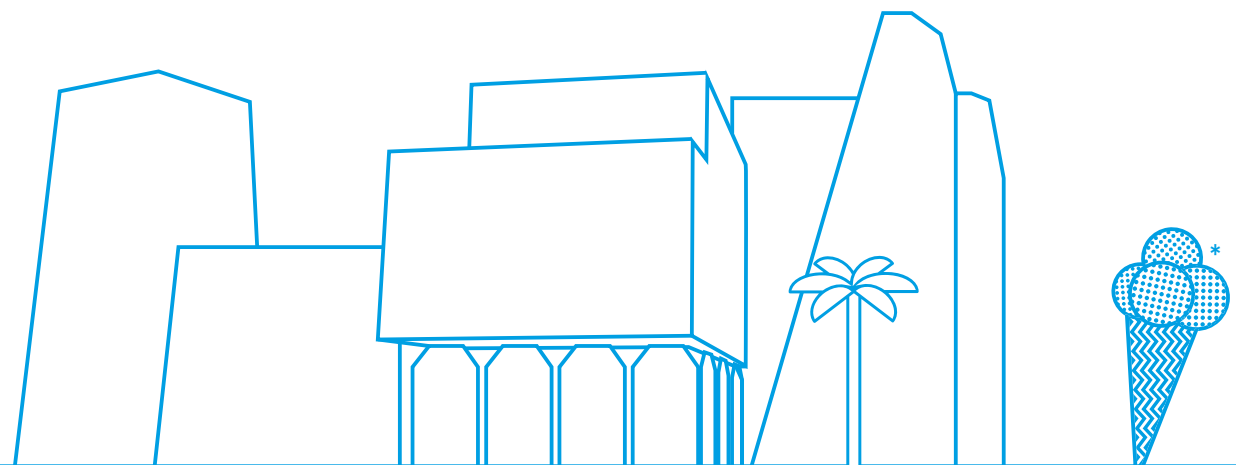


Lignes d'Azur points of sale:

These are spread across the entire Métropole Nice Côte d'Azur area. Go to lignesdazur.com to see the list of retailers.



* Fruitée by Joana Vasconcelos



I validate my ticket, even when making a connection



Card or smartphone

Validation is mandatory for everyone, every time you get on board, including if you are a season ticket holder.

Android : Telephone or card: I validate with a simple swipe on the validator

iOS : Card: I validate with a simple swipe on the validator



Fines

€ 10

Fine €10

> Season ticket card not validated

€ 40

Fine €40

> Ticket not validated, or validation made in front of the inspectors

€ 60

Fine €60

> Travelling without a ticket
> Travelling with an illegible or torn ticket
> Travelling with a ticket that has already been used

> Travelling with a ticket unrelated to the service
> Irregular use of a free ticket
> Ticket for third party use only

If payment is not made to the inspectors immediately, the fine amount is increased by €40, reduced to €20 if the payment is made over the internet within 15 days.
If payment is not made after 2 months, the fine is forwarded to the Trésor Public [French Treasury].

i Where do I pay the fine?

> On lignesdazur.com

> Via the ticket machine for lines ① ② and ③

> At the infringements office (Jean Médecin station ②) – From 10 a.m. to 5 p.m. -

Tél. 04 93 55 11 32

The Park and Ride Parcazur



Park with complete peace-of-mind in the Parcazur car parks!

Over 3,000 spaces, of which 80 for the disabled

General Parcazur operation:

- > To exit the Parcazur, you must be in possession of a ticket validated that same day on one of the Lignes d'Azur urban fare lines, and which must be equivalent to at least a return ticket.
- > **The 1st validation must be made within a maximum of 2½ hours of entering the Parcazur.**
- > **The 2nd validation must be made at least one station before that of the Parcazur in which the vehicle is parked.**

Parcazur available to you

Parcazur Vauban 66, rue de Roquebillière - 06300 Nice

Parcazur Pont Michel Route de Turin - 06300 Nice

Parcazur Port Lympia Quai Amiral Infernet - 06300 Nice

Parcazur Henri Sappia 2, bd Henri Sappia - 06100 Nice

Parcazur Gorbella 61, bd Gorbella - 06100 Nice

Parcazur Charles Ehrmann 155, bd du Mercantour - 06200 Nice

Parcazur Carras - Les Bosquets 8, avenue de Carras - 06200 Nice

Parcazur Saint-Isidore 20, rue Alain Mimoun - 06200 Nice

Parcazur PEM Cagnes-sur-Mer 39, avenue de la Gare -
06800 Cagnes-sur-Mer

The tickets

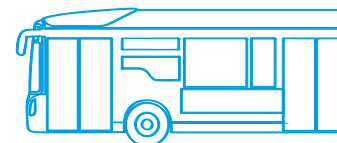
Other tickets allowing use of the P+R:

- Lignes d'Azur season tickets
- Carte Azur
- SudAzur Pass
(with zone 4 Métropole Nice Côte d'Azur extension)
- 1 return
- Multi-trip
- 1-day Pass
- 2-day Pass
- 7-day Pass
- Parcazur Leisure



Caution: the 1 single trip ticket and the Azur ticket do not allow for taking a vehicle out of a Parcazur. Parking is limited to the current day, thus prohibited outside of opening hours. Those contravening the rules must remedy their situation in order to be able to remove their vehicle.

More information on lignesdazur.com



Lignes d'Azur informs you

For more information, the customer services centre remains at your disposal

From 6 a.m. to 8.30 p.m. Monday to Saturday.

From 7 a.m. to 8 p.m. on Sunday

08 1006 1006

Service 0,06 €/min
+ prix appel

All info live on the website



lignesdazur.com

Timetables, trip calculator, disruptions, points of sale, etc....

Find us on social media



@lignesdazur
To find out all the network's news



@lignesdazur
Like, comment and share your best photos!



@lignesdazur.off
Like, comment and discover the network's news!



@lignesdazur
To learn more about the network!



* Sculpture of a woman in bronze, a work by Volti

**LIGNES
D'AZUR**
Nice Côte d'Azur en toute Liberté

**MÉTROPOLE
NICE CÔTE D'AZUR**